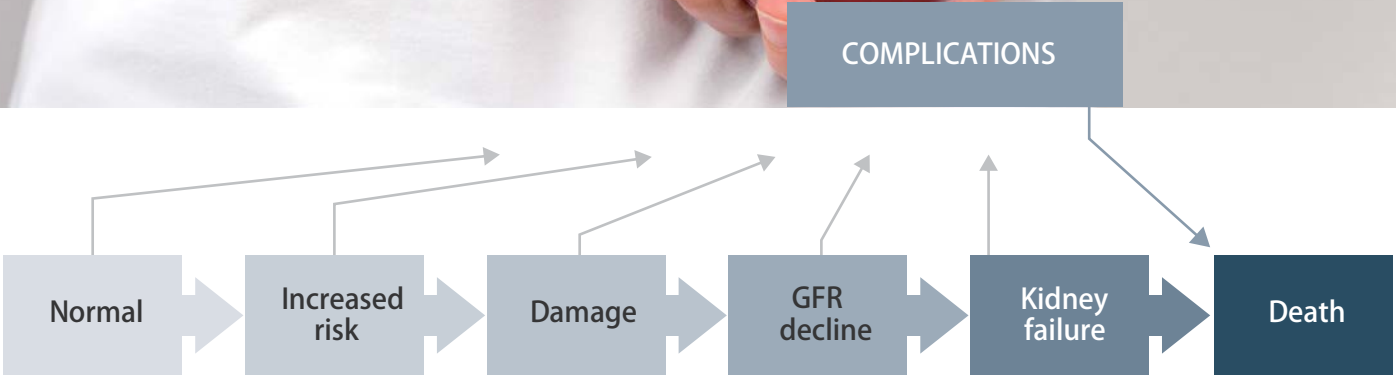
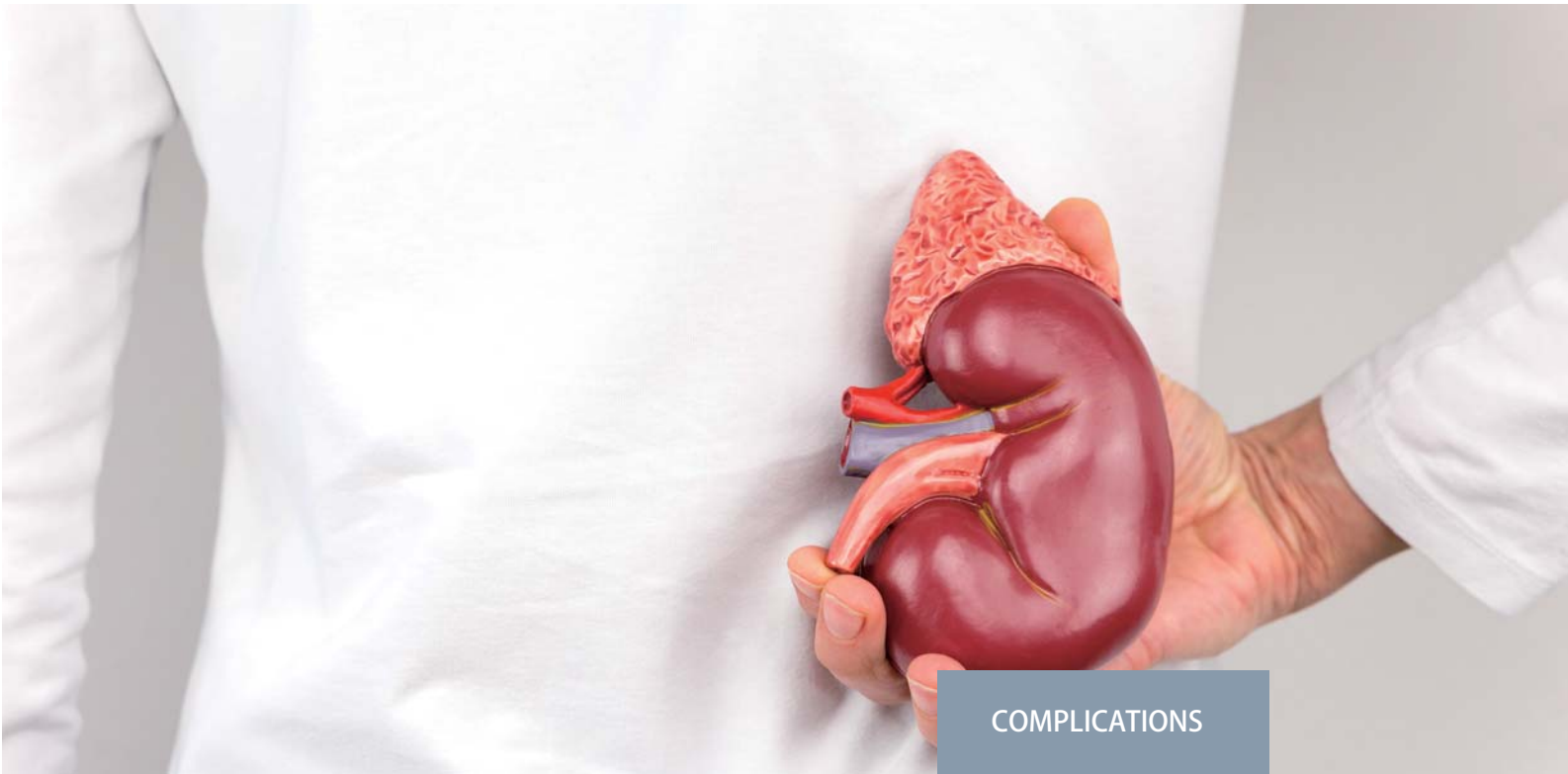




WWW.SINGCLEAN.NET

HANGZHOU SINGCLEAN MEDICAL PRODUCTS CO., LTD.
TEL: +86-571-63431868
E-mail: marketing@singclean.net



MAU NGAL
Rapid Diagnosis of Renal Dysfunction



Microalbuminuria (MAU) Rapid Test Kit (Colloidal Gold)

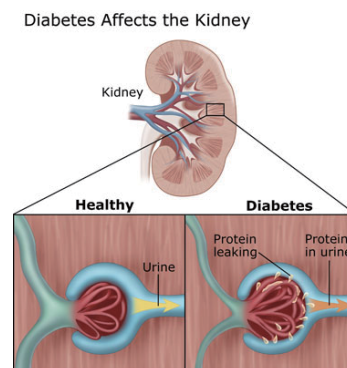
Intended Use

This kit is a rapid visual immuno-assay for the qualitative, presumptive detection of microalbumin in urine. The test is used as an supplementary method in the diagnosis of diabetic nephropathy and other renal damage. MAU occurs when the kidney leaks small amounts of albumin into the urine.

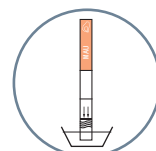
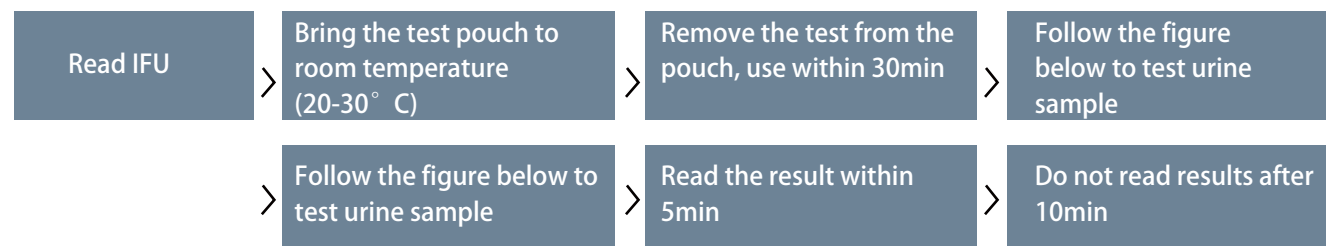
- The first indicator of a renal dysfunction, especially for diabetic patients.
- Independent risk indicator to evaluate the progression of chronic kidney disease (CKD).

Specification

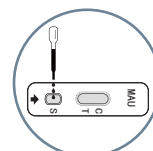
High sensitivity	20mg/L
Small sample size	two drops urine
Shelf life	24 months



Testing Procedure



Strip



Cassette



Midstream

Interpretation of Results

Negative (-)		Two color bands are visible. One is located in the test line region (T), the other is in control line region (C). Which means the MAU concentration is not present in urine or too low for detection.
Positive (+)		Only one color band appears in the control region (C). No visible band on the test region (T) means the MAU concentration is more than 20mg/L, which indicate possible CKD.
Invalid		No visible bands in the control and test regions. Make sure to follow the above specified instructions for optimum results.

Neutrophil Gelatinase-Associated Lipocalin Rapid Test Kit (Colloidal Gold)



Intended Use

NGAL Rapid Test Kit applies colloidal gold Immunol Chromatography, for the qualitative detection of Neutrophils Gelatinase Associated Lipocalin (NGAL) in urine. The test is used as an aid in the early diagnosis of acute kidney injury, risk classification and treatment monitoring.

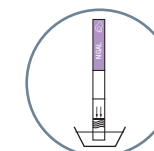
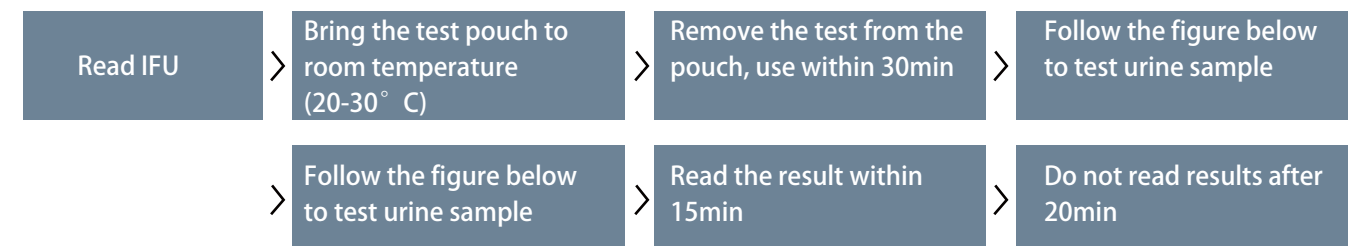
- The optimal biomarker for early diagnosis of acute kidney injury (AKI).
- Treatment and detection of AKI and prognosis evaluationDiagnosis of AKI.

Specification

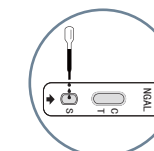
High sensitivity	20ng/mL
Small sample size	two drops urine
Shelf life	24 months



Testing Procedure



Strip



Cassette



Midstream

Interpretation of Results

Positive (+)		Two color bands are visible. One is located in the test line region (T), the other is in control line region (C). The presence of both test and control lines indicate possible AKI.
Negative (-)		Only one color band appears in the control region (C). No visible band on the test region (T) is present since NGAL concentration is not present in urine or too low for detection.
Invalid		No visible bands in the control and test regions. Make sure to follow the above specified instructions for optimum results.